

# Lightning Learning: Measles



em3.org.uk



@EM3FOAMed

# #EM3

East Midlands Emergency Medicine Educational Media

## STOP!

Measles has a 90% transmission rate if unvaccinated and the **airborne survivability of the virus = 2 HOURS!**

### SYMPTOMS

- Discrete morbilliform rash (starting on the hairline) moving down the body
- The **3C's** (cough, coryza, conjunctivitis)
- Koplik spots on buccal mucosa

### THE MEASLES TIMELINE

Incubation <i>(asymptomatic)</i>	Prodrome <i>(3C's, Fever, K. spots)</i>	Rash
10-21 days	3 days	6 days

### Contagious:

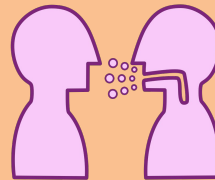
4 days pre/  
post rash



## LOOK

### COMPLICATIONS?

- Otitis media
- Diarrhoea
- Croup, Bronchitis
- Stillbirth/miscarriage if pregnant



### RARE (but serious)

- Subacute sclerosing panencephalitis (SSPE) 7-28 cases per 100,000 cases of measles
- Death

### TREATMENT?

- Supportive treatment, Isolation to prevent spread and contact tracing
- Notify Public Health

Children in the UK have MMR vaccines at 12 months and 3 years 4 months.

1st vaccination offers only 80-90% effectiveness against measles.

2nd vaccination gives up to 97% → <http://bit.ly/2Lij3Wj> (CDC)

## LEARN

Measles: A Brief Historical & Clinical Review (DTFB) <http://bit.ly/32jUCwY>

Routine Childhood Immunisation Schedule (Public Health England) <http://bit.ly/2xlHsLT>

SSPE (Post Grad Med Journal) <http://bit.ly/32jYDD>

### RASH DISTRIBUTION OF MEASLES

